



# HERON PARK

A DAVID V. JOHNSON COMMUNITY



In the fabulous gated community of Heron Park, majestic homes occupy exquisite sites, approached over rolling hills, surrounded by mature trees and intertwined with miles of walking trails. Developed by the renowned David V. Johnson Company, creator of the region's most spectacular environments, Heron Park now presents the accomplishment of a perfect partnership – the exquisite homes of the Frankel Organization LLC and a community habitat beyond compare.

Breathlessly anticipated has been the David Lubin-designed estate home on Lot #8, an inspired rendering of a traditional four-bedroom colonial with a splendid view of all-sports Forest Lake. Distinguished by its exterior of brick and natural stone with limestone accents and defining details including corner quoins, tympanums, round-top windows and a statement making entry arch, this home exudes the refined grace of its setting and establishes a new standard for interior space.

Its sweeping circular staircase establishes the drama of the two-story foyer where angled French doors open to a spacious library. Across from it, the formal living room features 14 foot ceiling and is warmed by the glow of a fireplace with a stone surround. An arched entry connects the living room to the formal dining room, large enough to accommodate the best attended dinner parties. Casual space is plentiful – the kitchen, with the finest equipment from Sub Zero, Wolf and Bosch and a convenient island, blends with the family room so each enjoy a second fireplace and a spacious nook. Walls of windows bring sunlight into all the space.

A rear foyer accesses a second stairway and features a walk-in closet and separate lavatory near an expansive laundry room with built in ironing center and large closet.

Upstairs, four large private bedroom suites each have their own walk-in closet. The master suite with a tray ceiling features superior closeting as well as a sitting area with a cathedral ceiling and treetop views. A rejuvenating master bath features a whirlpool spa surrounded by a glass bay, dual sinks in the bath area as well as a convenient sink in the dressing room.

The walk out lower level is ideal for finishing. Elevator prep is provided.  
5,373 Square Feet \$2,695,000.

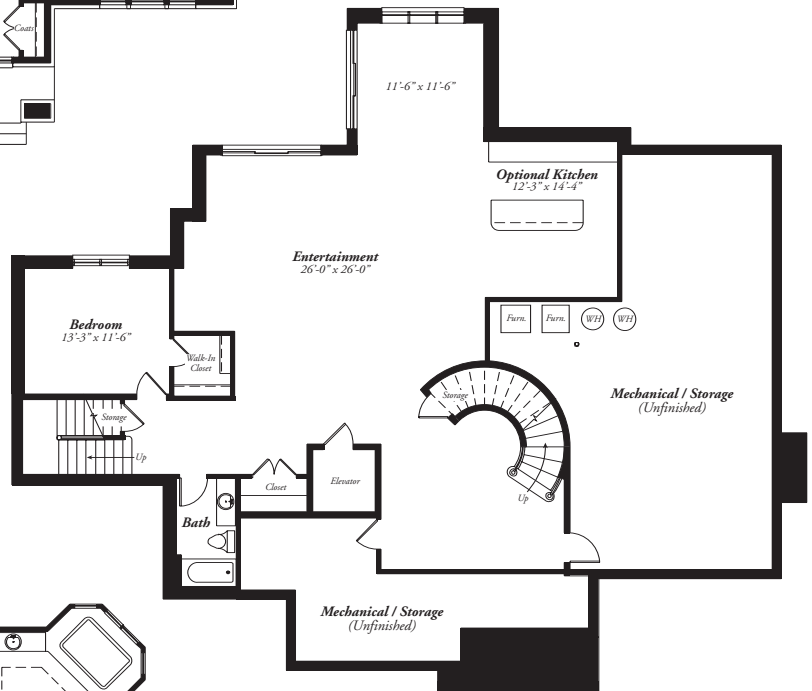
The  
*frankel*  
Organization

248-661-1100

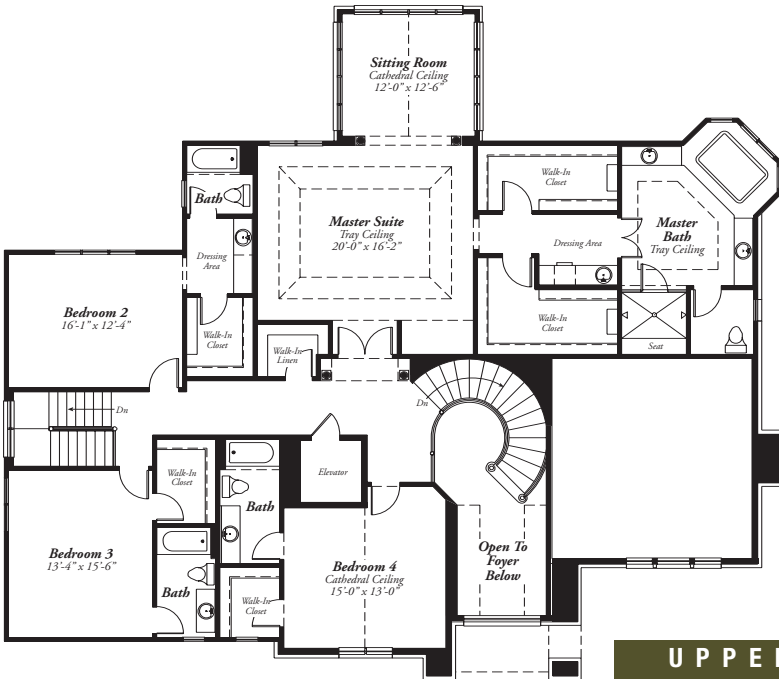


MAIN LEVEL

**SOLD**



OPTIONAL LOWER LEVEL



UPPER LEVEL

All information contained herein was accurate at the time of publication. In order to maintain the high degree of quality and incorporate management with greater facility and economy, we reserve the right to make changes in price, specifications, materials, or to change or discontinue models without notice or obligation. Floor plan dimensions are approximate.

© 2005 The Frankel Organization, L.L.C. Any duplication of these plans without prior permission is prohibited.

